



Hildabugs update- July 2021



Kentish snail



Thick legged flower beetle

Photos on site June/July 2021 (identification approximate!)

Birds:

- Canada geese (mixed families) with goslings- *Branta canadensis*
- Mallard pair with ducklings- *Anas platyrhynchos*
- Carrion crow- *Corvus corone*
- Blackbirds breeding pair, nest on site- *Turdus merula*
- Wood pigeon- *Columba palumbus*

Insects:

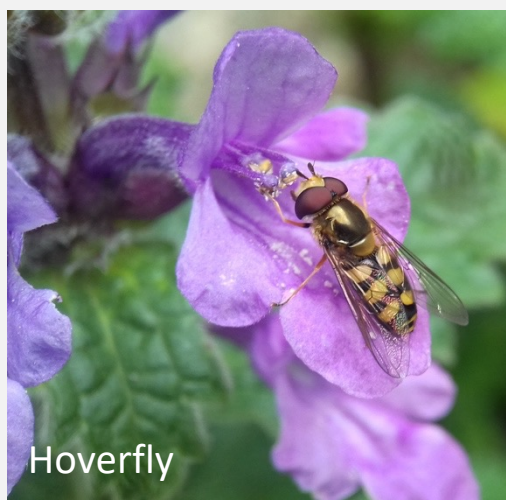
- Cockchafer beetle- *Melolontha melolontha*
- Honey bee- *Apis mellifera*
- Bumble bee, buff tailed- *Bombus terrestris*
- Thick legged flower beetle, female- *Oedemera nobilis*
- Hoverfly- *Eupeodes luniger*
- Hoverfly- *Sphaerophoria*
- Greenbottle fly- *Lucilia sericata*
- Aphid wasp- *Pemphredon*
- Leaf cutter bee, patchwork- *Megachile centuncularis*
- Blue tailed damsel fly, male- *Ischnura elegans*
- Green orb weaver spider- *Araneus Cucurbitina*
- Money spider- *Lepthyphantes tenuis*
- Harlequin ladybird larva and pupa- *Harmonia axyridis*
- Pill woodlouse- *Armadillidium vulgare*
- Kentish snail- *Monacha cantiana*



Hoverfly



Green orb weaver spider



Hoverfly



Harlequin ladybird pupa