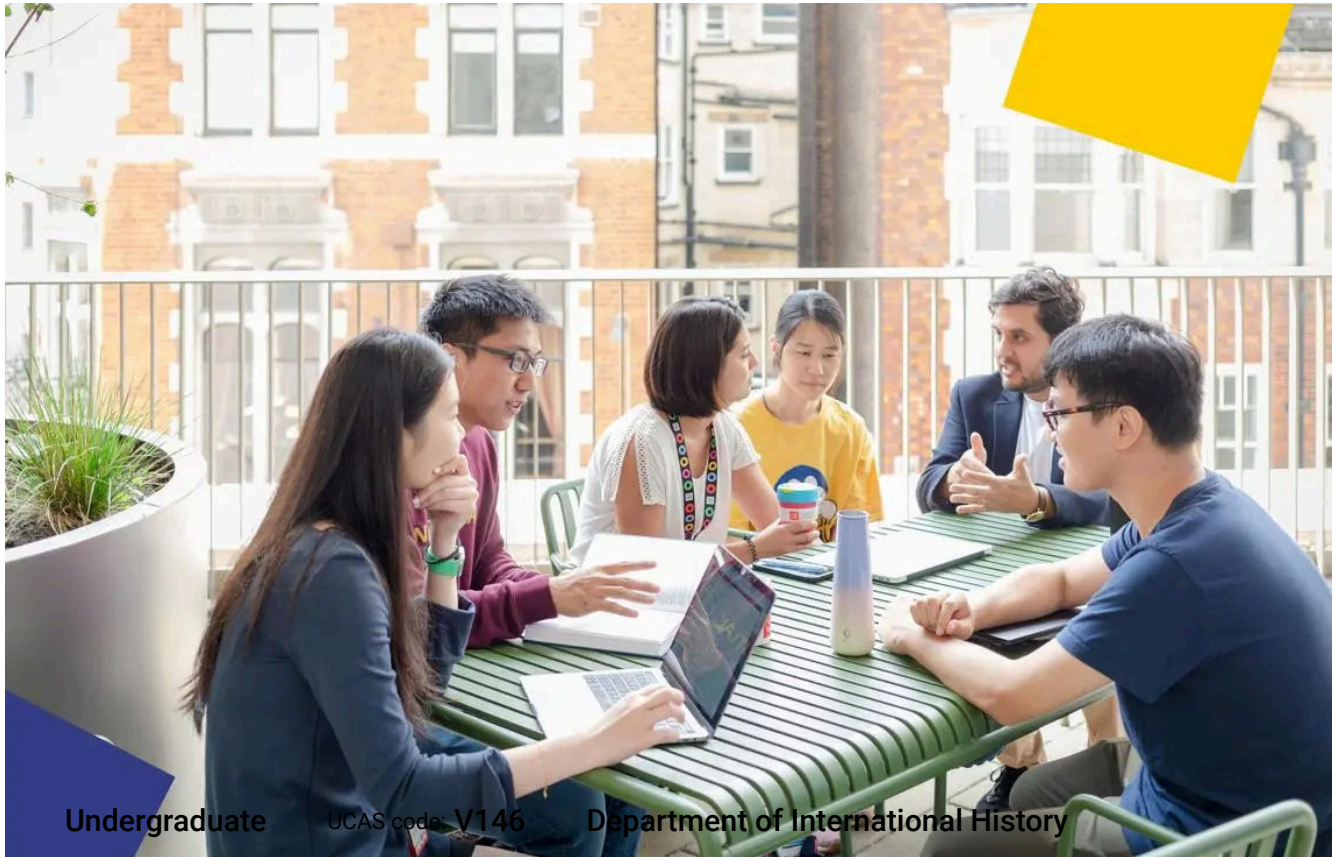


Study at LSE (<https://www.lse.ac.uk/study-at-lse>) > Undergraduate (<https://www.lse.ac.uk/study-at-lse/Undergraduate>) >

BA History



Undergraduate

UCAS code: V146

Department of International History

BA History

Learn about the forces that have shaped the past and the world we live in today with our international history degree programme.

Register your interest(<https://lse360.my.salesforce-sites.com/form?formid=217726>)

How to apply(<https://www.lse.ac.uk/study-at-lse/Undergraduate/Prospective-Students/How-to-Apply>)

Key information

Study mode / Programme availability

Home full-time students (Three years)

Open

Overseas full-time students (Three years)

Open

Academic year

2025/26

Start date

20 September 2025

Location

Houghton Street, London

Application deadline

29 January 2025

- Overview
- Entry requirements
- Programme content
- Why study with us
- Your application → F



BA History at LSE

Overview

Introduction Preliminary readings

This degree is distinctive for its international perspective on the past. Spanning the 15th century to the present day, the programme pays as much attention to political, economic, social and cultural developments that have shaped states as to the relationships between them.

You can choose from a wide range of history courses covering virtually every region of the world and period in history. The Department of International History is world-leading for research and teaching. Taught by internationally acclaimed academics, you'll develop your analytical powers, analyse complex evidence from a variety of sources and learn how to present your findings clearly – all highly transferable skills that are valued by employers.

You can also take options from other departments, including a language specialism – see the Programme Structure and Courses section for details.

LSE history graduates continue to have one of the best rates of employability and earnings after graduation in the UK. Our graduates secure rewarding and challenging careers in politics, journalism, the media consulting, law, research and teaching.

Entry requirements

Here, you can check our entry requirements for GCSEs, A-levels (please read them alongside our information about subject combinations) and the International Baccalaureate (IB) Diploma. We also consider applications from students with a range of [other UK qualifications](https://www.lse.ac.uk/study-at-lse/Undergraduate/Prospective-Students/How-to-Apply/Entry-Requirements) (<https://www.lse.ac.uk/study-at-lse/Undergraduate/Prospective-Students/How-to-Apply/Entry-Requirements>) and from overseas. Please select the overseas button below and choose your country from the dropdown list to find the equivalency to A-levels of your qualification.

Home Overseas

GCSEs

—

For GCSEs, you'll need a strong pre-16 academic profile such as several GCSE grades of A (or 7) and A* (or 8-9).

We also ask for a good set of GCSE grades or equivalent across a broad range of subjects, with a minimum of grade B (or 6) in GCSE English and Mathematics.

A-levels

—

AAA

We also consider your AS grades, if available.

Contextual admissions A-level grades

+

AAB

Read our [undergraduate admissions information](https://www.lse.ac.uk/study-at-lse/Undergraduate/Prospective-Students/How-to-Apply/Admissions-Information) (<https://www.lse.ac.uk/study-at-lse/Undergraduate/Prospective-Students/How-to-Apply/Admissions-Information>) to learn more about contextual admissions.

A-level subject combinations

+

We consider your combination of subjects as well as your grades.

A broad mix of traditional academic subjects provides the best preparation for studying at LSE. We expect applicants to have at least two full A-levels (or equivalent) in these subjects.

We're looking for students with a genuine interest in and enthusiasm for the social sciences, particularly international history.

There is no set subject combination but typical choices include History, English, Economics, Government and Politics, Sociology, modern languages and Philosophy. A-level History (or equivalent) is not a mandatory subject.

Mathematics and Further Mathematics at A-level will be considered when combined with an essay-writing subject.

Find out more about A-level subject combinations (<https://www.lse.ac.uk/study-at-lse/Undergraduate/Prospective-Students/How-to-Apply/Admissions-Information>).

IB Diploma

+

38 points overall , including 766 at higher level

Contextual admissions IB grades

+

37 points overall , including 666 at higher level

Read our [undergraduate admissions information](https://www.lse.ac.uk/study-at-lse/Undergraduate/Prospective-Students/How-to-Apply/Admissions-Information) (<https://www.lse.ac.uk/study-at-lse/Undergraduate/Prospective-Students/How-to-Apply/Admissions-Information>) to learn more about contextual admissions.

We welcome students from all walks of life at LSE. We want to recruit students with the very best academic merit, potential and motivation. So, whatever your background, please do apply. Get all the details on our general [entry requirements](https://www.lse.ac.uk/study-at-lse/Undergraduate/Prospective-Students/How-to-Apply/Entry-Requirements) (<https://www.lse.ac.uk/study-at-lse/Undergraduate/Prospective-Students/How-to-Apply/Entry-Requirements>).

Competition for places at LSE is high. We cannot guarantee you an offer of a place even if you're predicted or achieve our standard entry requirements.

Our standard offer requirements are intended only as a guide and, in some cases, you'll be asked for different grades.

Explore our campus

Get a glimpse of life at LSE with our campus tour video. See the iconic spots, facilities, and vibrant student spaces that make our university unique.

Watch the campus tour video(<https://www.youtube.com/watch?v=FwFLb8y960Q>)



Programme content

On this programme, you'll study 12 units over three years, plus [LSE100](https://info.lse.ac.uk/current-students/lse100/about-lse-100) (<https://info.lse.ac.uk/current-students/lse100/about-lse-100>).

Year 1 Year 2 Year 3

You'll take two compulsory courses and two course options (chosen from three history courses), one international relations course, language courses and options from other departments.

Additionally, you'll take LSE100.

HY120

One unit

Historical Approaches to the Modern World

(https://www.lse.ac.uk/resources/calendar/courseGuides/HY/2023_HY120.htm).

The LSE Course (<https://info.lse.ac.uk/current-students/lse100>)

Courses to the value of two units from the following:

+

EH101

One unit

The Internationalisation of Economic Growth, 1870 to the Present Day

(https://www.lse.ac.uk/resources/calendar/courseGuides/EH/2023_EH101.htm)

HY113

One unit

Empires and Resistance in Global History

(https://www.lse.ac.uk/resources/calendar/courseGuides/HY/2023_HY113.htm)

HY116

One unit

International Politics since 1914: Peace and War

(https://www.lse.ac.uk/resources/calendar/courseGuides/HY/2023_HY116.htm)

HY118

One unit

Faith, Power and Revolution: Europe and the Wider World, c.1500-c.1800

(https://www.lse.ac.uk/resources/calendar/courseGuides/HY/2023_HY118.htm)

Outside courses to the value of one unit

(<https://www.lse.ac.uk/resources/calendar/programmeRegulations/undergraduate/2024/BAHistory.htm>)

Browse your options

Language specialism

+

If you've taken and passed at least one language course in each year of your degree (25% of your programme of study), you can add a language specialism to your degree award and certificate – eg BA History (with French).

To qualify, students must take all courses in the same language (French, Spanish, German, Mandarin or Russian). The three courses must also become consecutively harder (such as beginner, intermediate and advanced).

Programme regulations at LSE

+

For the latest list of courses, please go to the relevant [School Calendar page](https://www.lse.ac.uk/resources/calendar/programmeRegulations/undergraduate/2024/BAHistory.htm) (<https://www.lse.ac.uk/resources/calendar/programmeRegulations/undergraduate/2024/BAHistory.htm>).

You may be able to take a language, literature or linguistics option as part of your degree. Find all the details on our [Language Centre web pages](https://www.lse.ac.uk/language-centre/undergraduate-degree-courses/degree-courses-as-part-of-an-undergraduate-degree) (<https://www.lse.ac.uk/language-centre/undergraduate-degree-courses/degree-courses-as-part-of-an-undergraduate-degree>).

A few important points you'll need to know:

We may need to change, suspend or withdraw a course or programme of study, or change the fees due to unforeseen circumstances. We'll always notify you as early as possible and recommend alternatives where we can.

The School is not liable for changes to published information or for changing, suspending or withdrawing a course or programme of study due to events outside our control (including a lack of demand, industrial action, fire, flooding or other damage to premises).

Places are limited on some courses and/or subject to specific entry requirements so we cannot therefore guarantee you a place.

Changes to programmes and courses may be made after you've accepted your offer of a place – normally due to global developments in the discipline or student feedback. We may also make changes to course content, teaching formats or assessment methods but these are always made to improve the learning experience.

For full details about the availability or content of courses and programmes, please take a look at the School's [Calendar](http://www.lse.ac.uk/resources/calendar/undergraduate.htm) (<http://www.lse.ac.uk/resources/calendar/undergraduate.htm>), or contact the relevant academic department.

Some major changes to programmes/courses are posted on our [updated undergraduate course and programme information page](https://info.lse.ac.uk/staff/divisions/academic-registrars-division/Teaching-Quality-Assurance-and-Review-Office/Courses-and-Programmes/Undergraduate-course-and-programme-information-for-prospective-students) (<https://info.lse.ac.uk/staff/divisions/academic-registrars-division/Teaching-Quality-Assurance-and-Review-Office/Courses-and-Programmes/Undergraduate-course-and-programme-information-for-prospective-students>).

Why study with us

Discover more about our students and department.



“

The Department of History truly reflects and embodies the international focus that is so unique to LSE.

Ananya Sharma, UK, BA History

[Read more >](#)

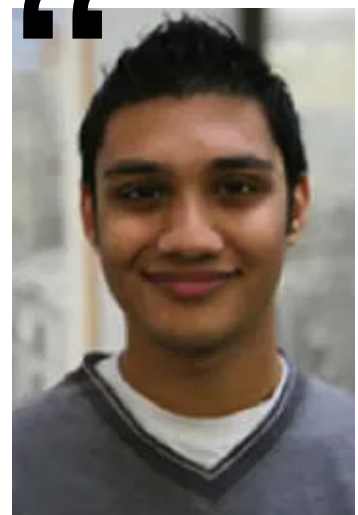


LSE is a great place to learn – a combination of interesting courses, enthusiastic teachers (among the best in the world!) and a wide range of teaching resources and materials.

Sachin Mehta, BA History

[Read more >](#)

“



Your application

Overview Who attends

We consider each application carefully, taking into account all the details you've included on your UCAS form, such as:

academic achievement (<https://www.lse.ac.uk/study-at-lse/Undergraduate/Prospective-Students/How-to-Appl/Entry-Requirements>), including predicted and achieved grades (also see specific information about this programme in the "entry requirements" above)

subjects and subject combinations (<https://www.lse.ac.uk/study-at-lse/Undergraduate/Prospective-Students/How-to-Appl/Admissions-Information>) (also see specific information about this programme in the "entry requirements" above)

your personal statement (<https://www.lse.ac.uk/study-at-lse/Undergraduate/Prospective-Students/How-to-Appl/Completing-the-UCAS-form/Personal-Statement>)

your teacher's reference (<https://www.lse.ac.uk/study-at-lse/Undergraduate/Prospective-Students/How-to-Appl/Completing-the-UCAS-form/Reference>)

educational circumstances (<https://www.lse.ac.uk/study-at-lse/Undergraduate/Prospective-Students/How-to-Appl/Admissions-Information>)

You may also have to provide evidence of your English proficiency, although this is not needed at the application stage. See our English language requirements page (<https://www.lse.ac.uk/study-at-lse/Undergraduate/Prospective-Students/How-to-Appl/English-language-requirements>).

532
Applications

63
Intake

Fees and funding

The [table of fees](https://info.lse.ac.uk/staff/divisions/Planning-Division/Table-of-Fees) shows the latest tuition fees for all programmes.

You're charged a fee for each year of your programme. Your tuition fee covers registration and examination fees payable to the School, lectures, classes and individual supervision, lectures given at other colleges under intercollegiate arrangements and, under current arrangements, membership of the Students' Union. It doesn't cover living costs or travel or fieldwork.

Home Overseas

£9,250

Home student fee per each year of your programme

This is the 2025/26 tuition fee. The home student undergraduate fee may rise in line with inflation in subsequent years.

Fee status

+

Your tuition fees, and eligibility for any financial support, depend on whether you're classified as a home or an overseas student – known as your fee status. We assess your fee status based on guidelines from the UK Government's Department for Education.

Learn more about [fee status classification](https://www.lse.ac.uk/study-at-lse/international-students/fee-status-classification).

We recognise that the cost of living in London may be higher than in your home town or country. LSE provides generous financial support, in the form of bursaries and scholarships, to UK, EU and overseas students.

Additionally, the UK Government provides loans to UK and some EU students. Some overseas governments also offer funding.

[Further information on tuition fees, living costs, loans and scholarships](https://www.lse.ac.uk/study-at-lse/Undergraduate/fees-and-funding)

(<https://www.lse.ac.uk/study-at-lse/Undergraduate/fees-and-funding>).

Learning and assessment

How you learn How you're assessed

Teaching

+

Format and contact hours: you'll attend lectures and small classes – with around eight hours of contact time each week. Hours vary depending on the course. Get a broad idea of the study time involved in the [Calendar](http://www.lse.ac.uk/resources/calendar/) within the Teaching section of each [course guide](http://www.lse.ac.uk/resources/calendar/courseGuides/undergraduate.htm)

(<http://www.lse.ac.uk/resources/calendar/courseGuides/undergraduate.htm>).

Independent study: you'll need to spend 15 to 20 hours each week on independent study during term time and holidays. This will involve reading extensively and writing between three to five essays and/or class papers per course.

LSE teaching: LSE is internationally recognised for teaching and research and you'll be taught by academic staff and PhD students. Learn more about the teacher responsible for each course in the relevant [course guide](http://www.lse.ac.uk/resources/calendar/courseGuides/undergraduate.htm)

(<http://www.lse.ac.uk/resources/calendar/courseGuides/undergraduate.htm>).

Academic support

+

Academic mentor: you'll meet with your academic mentor regularly to discuss your work. Your mentor can provide advice and guidance on academic issues and, where appropriate, personal concerns.

Other academic support: at LSE, we offer lots of opportunities to extend your learning outside the classroom.

LSE LIFE (<http://www.lse.ac.uk/intranet/students/LSE-Life/lseLIFE.aspx>) is a great place to get advice and practise the skills you'll need during your studies and beyond.

Through LSE LIFE, you can:

attend workshops on developing leadership skills, finding the right study/work/life balance and preparing for the world of work

develop your reading, academic writing and critical-thinking skills

gain experience of working in study groups and develop your cross-cultural communication and teamwork skills.

Disability and Mental Health Service: we want all LSE students to achieve their full potential. Students can access free, confidential advice through our [Disability and Mental Health Service](https://info.lse.ac.uk/current-students/student-wellbeing/disability-wellbeing/disability-and-mental-health-service) (<https://info.lse.ac.uk/current-students/student-wellbeing/disability-wellbeing/disability-and-mental-health-service>). This is the first point of contact for students.

Your timetable

+

The standard teaching day runs from 9am to 6pm, Monday to Friday. Undergraduate teaching is not normally scheduled for Wednesdays after 12 noon to allow for sports, volunteering and other extra-curricular activities.

The lecture and seminar timetable is published in mid-August and the full academic timetable (with information on classes) is published by mid-September via the [LSE timetables web pages](http://www.lse.ac.uk/intranet/diaryAndEvents/timetables/home.aspx) (<http://www.lse.ac.uk/intranet/diaryAndEvents/timetables/home.aspx>).

All personal undergraduate timetables are published in [LSE for You \(LFY\)](https://portal.lse.ac.uk/studentservices/) (<https://portal.lse.ac.uk/studentservices/>). For personal timetables to appear, you must be registered at LSE, be signed up for courses in LFY and ensured that there are no unauthorised clashes in your course selections. We try our best to minimise changes once personal timetables have been published. However, you'll be notified about any changes by email.

Graduate destinations

Through studying history you'll learn how to analyse complex evidence from a variety of sources, to develop your analytical powers and to present your findings effectively. These skills and a broad knowledge of the development of the world around us are valued by many employers.

Past students have followed a range of careers in politics, journalism, media and publishing, advertising, marketing, and public relations, public administration, the foreign service, industry, the charity and development sector, finance, consulting and the legal profession, as well as in research, teaching, libraries and archives.

Further information on graduate destinations for this programme (<https://info.lse.ac.uk/Current-Students/Careers/What-graduates-do>).

Median salary of our undergraduate students 15 months after graduating:

£30,000

Top 5 sectors our students work in:

Education, Teaching and Research

Financial and Professional Services

Other Professional, Scientific and Technical Activities

Information, Digital Technology and Data

Government, Public Sector and Policy

This data is drawn from the 2021/22 Graduate Outcomes Survey

(<https://info.lse.ac.uk/current-students/careers/what-graduates-do>), run by the Higher Education Statistics Agency (HESA). Median salaries are calculated for respondents who are paid in UK pounds sterling and in full-time employment.

Discover Uni

Every undergraduate programme of more than one year duration will have Discover Uni data. The data allows you to compare information about individual programmes at different higher education institutions.